

OPERATING INSTRUCTIONS LYNX PRO SERIES

CONGRATULATIONS, YOU HAVE JUST PURCHASED A HIGH QUALITY
COMMERCIAL GRADE BATHING SYSTEM.

PLEASE READ THIS MANUAL CAREFULLY BEFORE OPERATION YOUR NEW MACHINE.



PLEASE KEEP THIS MANUAL FOR FUTURE REFERENCE

IMPORTANT SAFETY PRECAUTIONS

WARNING!: To reduce the risk of fire, electric shock, or injury

WARNING

To avoid fire, **DO NOT** use with a flammable or combustible liquid to clean stalls, pens or other surfaces.



WARNING

To avoid electric shock, **DO NOT** expose to rain. Store Indoors.

When using this system, basic precautions should always be followed, including the following:

- 1) **DO NOT** leave unit when plugged in. Unplug from outlet when not in use and before servicing.
 - 2) **DO NOT** allow unit to be used as a toy. Close attention is necessary when used around or near children.
 - 3) Use only as described in this manual. Use only manufacturer's recommended attachments.
 - 4) **DO NOT** use with damaged cord or plug. If unit is not working properly because it has been dropped, dropped into water or left outdoors, or damaged in any way please , contact Anivac or a local service technician.
 - 5) **DO NOT** handle plug or appliance with wet hands.
 - 6) **DO NOT** use with any opening blocked. Keep free of dust lint, hair or anything else that may block air flow.
 - 7) **DO NOT** pick up anything that is smoking or burning such as cigarettes, matches, or hot ashes.
 - 8) **DO NOT** use to pick up hazardous chemicals.
 - 9) Turn off all controls before unplugging.
 - 10) Turn unit off immediately if foam or liquid comes from machine exhaust. Empty & clean out recovery (dirty) tank and use a defoaming agent to correct the problem.
 - 11) **DO NOT** use to pick up flammable or combustible liquids such as gasoline or use in areas where they may be present.
 - 12) **DO NOT** use where oxygen or anesthetics are used.
 - 13) Replace damaged or worn parts immediately with genuine original equipment parts to maintain safety and ensure the long life performance of your machine.
 - 14) This unit must be connected to a properly grounded outlet only
- See grounding instruction on page 3.

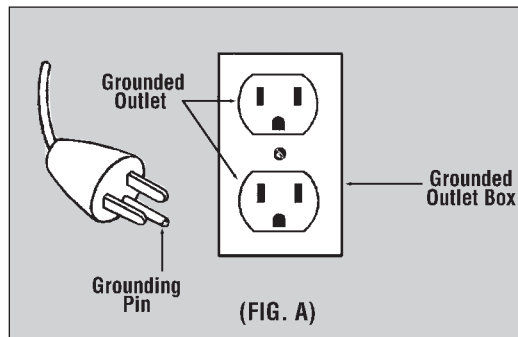
GROUNDING INSTRUCTIONS

DANGER: Improper use of the grounding plug can result in a risk of electric shock.

GROUNDING INSTRUCTIONS

This machine must be properly grounded. If it should malfunction or breakdown, grounding provides a path of least resistance for electrical current to reduce the risk of electric shock. This machine is equipped with 1 or 2 pigtail cords having an equipment-grounding conductor and grounding plug. The pigtails must be inserted into an appropriate 12 gauge 3 prong extension cord.

GROUNDING METHODS



This unit is for use on a nominal 120 volt circuit grounded plug that looks like the plug illustrated

Note: For further protection we recommend the GFCI (Ground Fault Circuit Interrupter) outlet.

WARNING!

Improper connection of the equipment-grounding conductor can result in a risk of electric shock. Check with a qualified electrician or service person if you are in doubt as to whether the outlet is properly grounded. DO NOT modify the plugs - provided with the appliance. If it will not fit the outlet, have a proper outlet installed by a qualified electrician.

ONE LAST REMINDER

Read All Instructions, Warning and Cautions Before Using. These guidelines are presented for your protection and convenience. Please read them carefully, since failure to heed these precautions could result in discomfort or injury. When using an electrical appliance, basic safety precautions should always be followed.

WARNING

TO AVOID FIRE, DO NOT USE WITH A FLAMMABLE OR COMBUSTIBLE MATERIALS

LYNX PRO SERIES - GENERAL INSTRUCTIONS

Congratulations on your purchase of an ANIVAC system. You are now equipped with the finest in bathing systems available today.

Shipping and Damage

This equipment is thoroughly inspected, tested, and packaged to provide equipment in good operating condition. The freight carrier received and signed for the equipment in good condition. Consequently it is most important to protect your interest by carefully complying with the following instructions:

Please inspect your cartons for any damage (including concealed damage) that might have occurred during shipment. This damage is the responsibility of the freight carrier and should be reported to the carrier immediately. It is your responsibility to issue a claim and to receive compensation from the carrier. Damage of this sort is not warranted.

Follow these easy step by step instructions to ensure proper operating performance.

1. Fill up the fresh water solution tank with clean tap water.
 2. Attach two 12 gauge extension cords (not included) to each of the pigtail cords located on the lower backside of the unit. The red pigtail powers the heater while the black pigtail powers the vacuum motors and pump.
 3. Plug each extension cord into a separate, grounded 20 amp wall socket circuit. When this is done the green indicator light will be lit.
 4. Attach the hose and wand assembly to the unit.
 5. Turn on the heater and the pump to the "on" position, the orange indicator light on the switch panel will be lit.
 6. With the solution line attached to the wand and the machine, prime the pump by squeezing the trigger on the wand (hold the wand over the solution tank so the water sprays back into the tank). This will pump water into the heater and force air out of the solution line. Let the heater heat up for 3 - 5 minutes before proceeding.
 7. Turn one vacuum switch to the on position. Note: the second vacuum motor is available for use on a horse that has a very thick heavy coat.
 8. NOTE: Due to the fact that the wands patented design places the water directly onto the skin of the horse (instead of onto the top of the hair as a water hose does) the use of cold water can be very shocking to the horse. Due to this please do not attempt to clean your horse with only cold water. The on demand heater in this machine will provide a boost to the temperature of the water that has been placed into the solution tank. However, it is important to always check the temperature of the water coming out of the wand prior to using it on your horse. In very cold temperatures such as during the winter it is possible that the temperature of the water coming from your water source will be too cold for the heater to overcome sufficiently for you to use to bathe the animal comfortably. Should this be the case you can help raise the final temperature of the water in one of two ways:
 - A. Use the shutoff valve on the solution line of the hose assembly to slow down the flow of water coming out of the wand assembly. Slowing down the flow of water will increase the contact time the water has inside the heater, thereby increasing the amount of temperature increase. NOTE: NEVER slow down the water flow to the point where the water pump starts to pulsate (turn on and off repeatedly) as this WILL damage your pump and shorten its life expectancy - this type of damage is not covered by your warranty. Although this method will slightly increase the time it takes to clean your horse it's a good way to ensure the comfort of your friend.
 - B. Supplement the heater by adding lukewarm water into the solution tank instead of cold water.
 - C. Supplement the heater by placing a bucket heater into the solution tank in order to bring the water up to a lukewarm temperature.
- NOTE: Your systems heater has protection that prevents it from heating water to a dangerous level - it is designed to only add as much heat as needed to bring

LYNX PRO SERIES - GENERAL INSTRUCTIONS

the water up to a comfortable level for the horse.

9. When the vacuum tank is full, empty it by using the drain hose at the rear of the machine. To do this first take the machine to a suitable place for dumping the dirty water. Then simply unclip the drain hose from the clip at the rear of the machine, remove the plug from the end of the hose and lower the hose towards the ground, thereby starting the flow of dirty water out of the tank. When complete replace the plug and insert the hose back into the holding clip. If a pail is used to empty the waste tank, do not use the same pail to fill the solution tank as this can result in putting dirt into the solution line that can plug the filters and/or nozzles, and generally degrade the solution line system.
10. If you need to empty the solution tank, detach the wand from the end of the vacuum hose and insert the vacuum hose into the solution tank. Turn one vacuum switch to the "on" position and transfer the solution into the vacuum tank, where it can be disposed of as outlined above.
11. Clean any debris off of the vacuum stack filter by removing the access lid at the top of the machine, and reaching into the tank where the filter can be accessed.



Maintenance

To receive reliable service from this equipment, regular maintenance is a requirement. Environments where animals are housed can be very dirty for any equipment. To get the most from your machine the following recommendations are offered.

1. Keep the equipment clean, both inside and out.
2. Lubricate brass quick disconnects and drain valves with a quality lubricant such as WD-40.
3. Flush solution systems regularly with a white vinegar solution of one cup vinegar to three cups of water. This will counter act hard water and alkaline deposits and will aid in keeping the spray nozzles clean.
4. Do not allow fluid either in solution or waste tank to sit - the system should be rinsed after each use.
5. Clean the strainer in the solution tank, the filter on the vacuum stack in the vacuum tank and the ends of the wands assembly after each use.
6. Do not use the same receptacle (pail) to fill the solution tank that was used to remove waste water from the vacuum tank.
7. When the unit is not in use, leave the vacuum tank lid open.
8. At the end of each day, run the vacuum for 3 minutes with the lid open.



LYNX PRO SERIES - GENERAL INSTRUCTIONS

Safety Precautions

These precautions are designed with the safety of the operator, the equipment, and others in mind and must be followed at all times to avoid serious personal harm and/or death, and damage to the unit.

1. Always use a grounded electrical outlet.
2. Always disconnect electric cable from electrical outlet before attempting to make any adjustments or repairs.
3. Never use this equipment as a toy.
4. Never use equipment near or around flammable or explosive materials, fuels, or solvents.
5. Never put flammable materials, fuels, or solvents into equipment.
6. Never lift the machine by the drain hose.
7. Do not allow the unit to freeze!
8. This equipment was not designed to be used in the rain.
9. Do not operate in wet conditions or standing water.
10. Do not operate equipment under any unsafe condition.
11. Do not operate if pigtails, hoses, etc. are cracked or frayed, or are otherwise in need of repair.
12. Common sense is a powerful force in protecting the operator, the equipment and others from serious injury and/or death.



Storage of Equipment

1. Store extractor indoors in dry area.
2. Recovery and solution tank should be empty and clean when the extractor is not in use.
3. Leave the recovery lid and the plug on the end of the drain valve open in order to air out the recovery tank.
4. Do not store in freezing temperatures unless a suitable amount of "Plumbing Line Anti-Freeze" has been run through the entire system, including tank, pump, solution lines and all wands. Plumbing line anti-freeze is safe for human and animal use and is available at most hardware or recreational vehicle stores.

INSTRUCTIONS: Pour the plumbers antifreeze into the solution tank, attach the hose and wand assembly, turn on the pump, pull the trigger on the wand in order to allow the antifreeze to pump through the system and out the end of the wand. Repeat as necessary for additional wands or hoses. Your system is now protected from freeze damage. Come warmer weather the antifreeze will be flushed out of the system the first time you run the machine.

DO NOT USE AUTOMOTIVE ANTIFREEZE!!

Warnings

1. Do not break off or pull the grounding prong on the plug.
2. Do not attempt repair on a warrantied machine unless instructions to perform it by an authorized shop are obtained from the factory.
3. Do not use citrus-based (D-Limonene) cleaners in this machine as they will attack the plastic housing.
4. To help ensure safety and promote the long life performance of your machine, do not use any replacement parts except those specified on the parts listing.

Operating the Lynx Vacuum Bathing System – Equestrian Instructions

The Cleaning Process – Horses

Note 1: Horses normally quickly acclimate to the sound of the machine. However, if you are dealing with an animal that is known or believed to be skittish, covering the machine with a blanket or blocking the front and sides of the base of the machine will greatly reduce the sound.

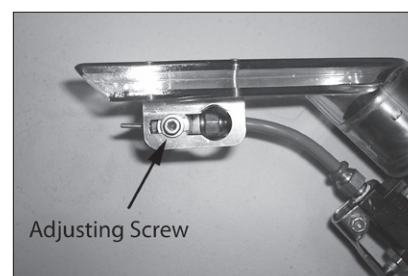
Adjusting the Wash Nozzles

The nozzles are adjusted by loosening the Allen screws holding the nozzle assembly in place using the supplied Allen key. The nozzles should be adjusted so that they are just touching the skin when the vacuum wand is held with slight pressure against the horses hair. Should the nozzles not be penetrating the coat sufficiently you will find that a lot of water will fall away from the horse and onto the ground. This is due to the fact that animal hair naturally resists the penetration of water to such an extent that it will prevent the water from going through to the skin. Alternatively, should you have the nozzles extended out too far you will find that the vacuum wand will not be able to vacuum the water from the coat, simply due to the fact that the nozzles are out too far thereby preventing the vacuum wand from sitting onto the hair.

NOTE: You should always keep the wand parallel to the surface of the horses skin so as to ensure that the nozzles are always in contact with the skin. This will ensure the proper deep cleaning of the coat.

Note 2 : For first time horses, it is best to slowly acclimate the horse to the system by first using the wand in a combing motion with the machine off. Then turn on the machine and continue to comb the horse for a bit prior to starting the flow of cleaning solution.

The cleaning wand is used in the direction of the flow of the coat. Starting at the front of the animal, gently place the wand into the coat and squeeze open the solution valve. Draw the wand along in one smooth motion and let the tool do the work. As you progress along perform additional passes using a slight overlap into the area just cleaned. If you move too slowly the cleaning solution may leak down the side of the animal, too quickly and you may leave the coat too wet. You will quickly get a feel for the proper speed.



Operating the Lynx Vacuum Bathing System – Equestrian Instructions

Continue cleaning the rest of the animal, pulling the wand along in the direction of the coat. The following cleaning pattern is suggested:

- Along the back and part way down the sides moving from front to back
- Horses sides and top portion of legs moving from top to bottom. Note: when cleaning the outside of the legs you may find it of benefit to reach under the animal and clean the inside of the opposite leg.
- Neck moving top to bottom
- Underside moving from front to back
- Clean the mane by passing the wand in short downward motions along the length of the mane.
- When cleaning the tail, gently cup the tail with one hand while placing the cleaning wand into the opposite side of the tail.
- Pull the trigger to release the cleaning solution and draw both hands along the length of the tail at the same time. If desired, using a cloth in the hand opposite the wand will help catch any over spray that may occur.
- Repeat the process while placing the wand into the sides or underside of the tail. You will need to take several passes to clean the tail effectively.

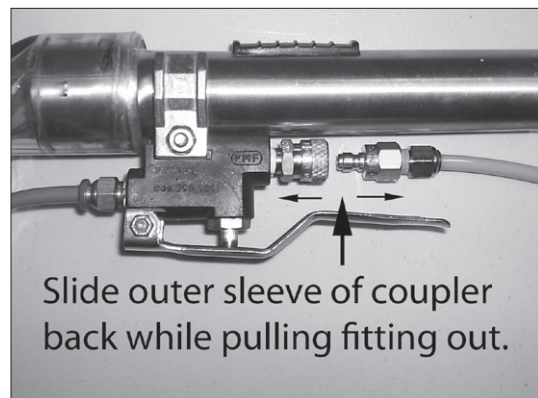


Cleaning the Lower Legs and Face

Your Anivac system has been supplied with a 2" (50mm) wide wand that has a brush on the end. This wand is specially designed for use when cleaning your horses legs and face and is also an excellent tool for spot clean up of manure and other stains. Change wands by using the coupler that is beneath the trigger on the nozzle. Slide back the outer jacket of the coupler of the wand while gently pulling on the male coupler attached to the solution hose. This will disengage the wand from the hose assembly. Reverse the process in order to install the brushed wand.

Operating the Lynx Vacuum Bathing System – Equestrian Instructions

Use the brushed wand in a gentle brushing motion on the horses legs. This combined with an occasional scrubbing motion when needed for stubborn dirt will completely clean the horses legs. When cleaning the horses face use the shutoff valve that is located at the end of the hose where it connects to the machine to slow down the volume of water coming out of the wand. This will greatly improve your chances of success when using the system on the face. Should your horse not accept the use of the tool on its face we suggest the use of a small cloth soaked in the shampoo solution for use in cleaning up this area.



Removing Manure Stains

While nothing will remove set in manure stains from a horses coat (that has had time to actually dye the hair) your Anivac system will do an excellent job of removing fresh stains. Manure stains are generally not deeply embedded into the coat and are sitting on the top layer of the horses coat - as such we suggest the following course of action.



1. Fill a spray bottle with full strength shampoo and pre-spray the stains prior to cleaning with the Anivac system. Allow to sit for approximately five minutes.
2. After the shampoo has had a chance to loosen up the stain, use the brushed wand (not the nozzled one) to gently vacuum the stain up and off of the coat.

Note: It is good practice to disinfect the end of the wand assembly on a regular basis. This will lessen the chance of transferring any bacteria or other unwanted substances. Use any commercially available solution or dip or spray the wand using a mix of one part bleach to five parts water.

Troubleshooting Information

ELECTRICAL SYSTEM

PROBLEM	POSSIBLE CAUSE	SOLUTION
No electrical power.	1. Defective power cord. 2. Circuit breaker off or fuse blown.	1. Replace 2. Turn circuit breaker on or replace fuse. 3. Unplug any equipment using the same circuit.
Switch is turned on. Intermittent power to motor(s).	1. Faulty electrical cable. 2. Defective switches. 3. Loose terminal or dis-colored terminal connections.	1. Repair or replace. 2. Replace. 3. Replace.
Electrical Shock	1. Equipment not grounded.	1. Locate grounded outlet.

VACUUM SYSTEM

PROBLEM	POSSIBLE CAUSE	SOLUTION
Vacuum motor on Little or no vacuum on wand head.	1. Drain hose open. 2. Defective vacuum hose 3. Vacuum disconnected	1. Close drain hose. Recovery tank lid must be closed. 2. Repair or replace. hose. Kinks in vacuum hose. 3. Open machine, connect vacuum hose to recovery tank.
Not enough vacuum power at the machine.	1. Damaged recovery tank lid. 2. Lint clogging ball - type shutoff screen. 3. Vacuum hose connection between stand pipe and vacuum motor. 4. Vacuum motor exhaust blocked. 5. Cords not plugged into seperate circuits	1. Replace 2. Remove screen. Clean out fibers and accumulated dirt. 3. Check for leaks around clamps and cuffs (tighten). Replace damaged hose(s). 4. Check air flow by removing hose from machine and feel the exhaust under the machine. Remove obstruction. 5. Relocate one cord to a different room.

VACUUM SYSTEM

PROBLEM	POSSIBLE CAUSE	SOLUTION
Motor running and no vacuum at all.	1. Faulty vacuum motor.	1. Replace.
No exhaust from the blowport.	2. Water shutoff closed.	2. Clean water shutoff screen.
Premature closing of ball type shutoff. Ball type shutoff failing to release after recovery tank is drained.	1. Dirty or clogged shut-off filter screen. 2. Ball coated with detergent or other foreign material. 2. Screen slightly out of round.	1. Remove and clean screen. 2. Remove and rinse ball with clean water. 3. Bend screen by squeezing slightly by hand until there is an obvious space between ball and inside of screen.

Foam/dirty solution coming out of vacuum exhaust port.

1. Foam from carpet by-passing water shutoff.
2. Elbow in vacuum tank is not positioned correctly.

1. Use additional defoamer.
2. The elbow should be pointed directly at the side wall of the tank away from the ball type shutoff.

SOLUTION SYSTEM

PROBLEM	POSSIBLE CAUSE	SOLUTION
Pump motor on – no spray through jets.	1. Clogged or faulty solution control valve. 2. Clogged or faulty quick disconnect on housing. 3. Punctured pump diaphragm. 4. Clogged jets	1. Check intake on valve and remove lint or other foreign material. 2. Depress plunger on solution hose against inside wall of solution tank. If solution is flowing at this point, the system is O.K. If no solution flows, check the quick disconnect for lint and other foreign matter. 3. Replace with diaphragm repair kit. 4. clean jets on wand or tool.

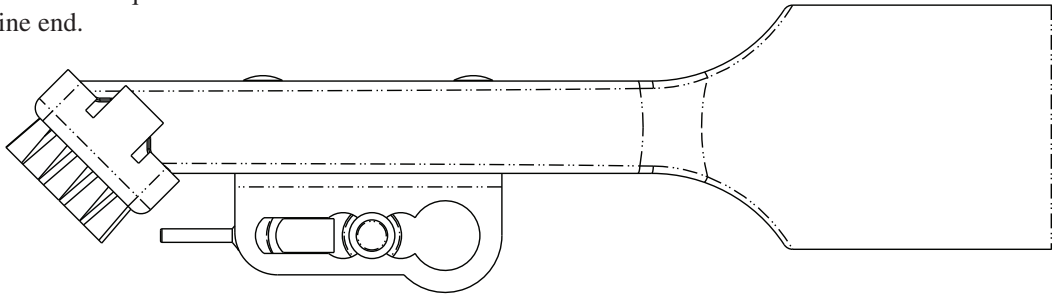
PROBLEM	POSSIBLE CAUSE	SOLUTION
Uneven spray from jet. Spray weak or uneven.	1. Clogged strainer in solution tank. 2. Clogged jet.	1. Unscrew strainer and remove lint and any other foreign material from screen. 2. Remove and clean.
Leaking or stuck solution valve.	1. Foreign material in valve. 2. Loose brass hex nut. 3. Valve worn or seals worn.	1. Remove brass hex plug, clean valve and replace. 2. Reseal hex and plug. 3. Replace worn parts with solution valve repair kit.
Pump motor not working.	1. Loose wiring 2. Defective pump pressure switch 3. Motor burnout	1. Tighten wiring 2. Replace with new pressure switch assembly 3. Replace pump motor
Pump pressure low	1. Clogged screens on 2. Punctured pump diaphragm. 3. Defective rectifier or motor. 4. Pump not primed	1. Unscrew strainer in solution tank remove lint and any other foreign material from screen. 2. Replace with diaphragm repair kit. 3. Replace. 4. Plug priming hose into solution connection and place end in solution tank. Run pump for 4 minutes
Pump pressure varies.	1. Worn carbon brushes. 2. Defective pump pressure control switch.	1. Replace brushes. 2. Replace.

LYNX PRO SERIES PARTS LISTING

Equestrain Wand Assembly

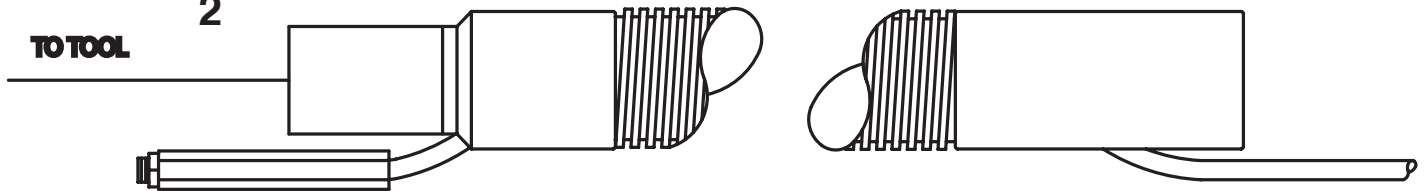
1-1/4" x 10' flex hose with 2"
stainless steel external jet wand,
fitted with scrubbing brush.
Solution shut off valve and quick
coupler at machine end.

1



2

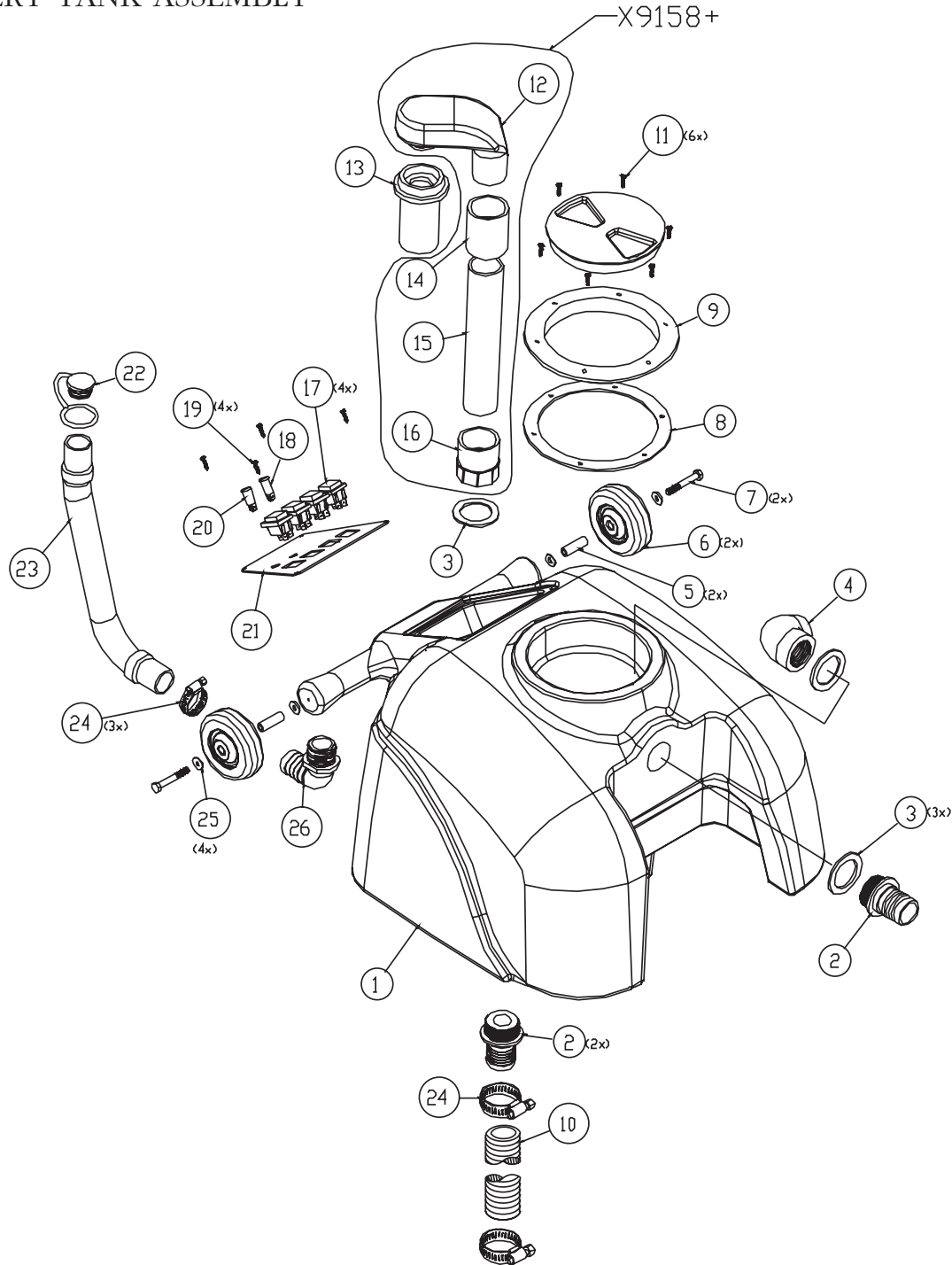
TO TOOL



ref. #	order #	description
1a	9486	4 PIN HAND TOOL
1b	9487	6 PIN HAND TOOL
2	9485	HOSE

LYNX PRO SERIES PARTS LISTING

RECOVERY TANK ASSEMBLY

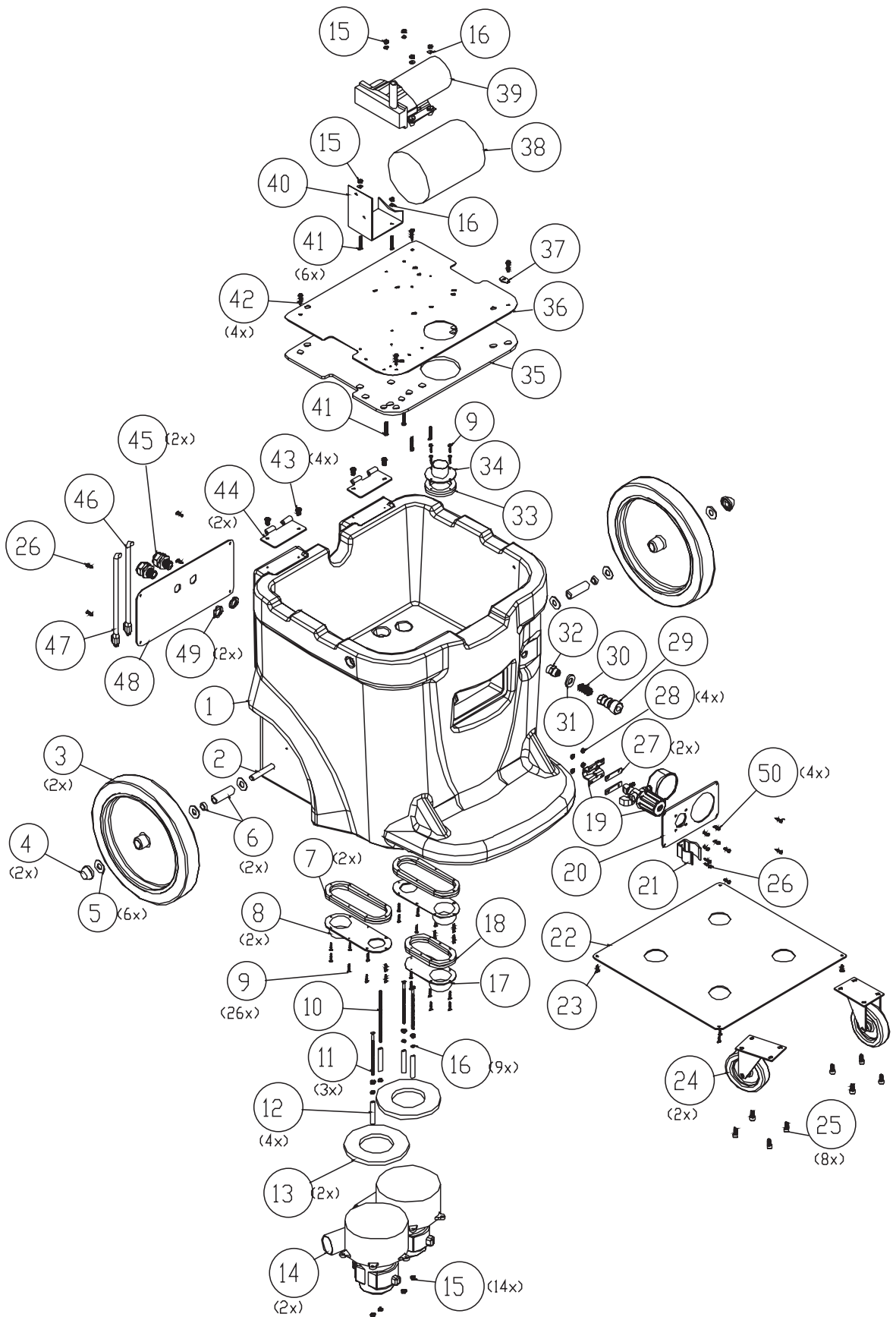


ref#	order#	description
1	X9113GRN	housing, recovery tank
2	PX25	fitting, plastic, hose barb
3	PX14A	dump valve gasket rubber
4	PX11A	fitting, plastic elbow
5	72486A	spacer, 1.625 long, .50 od, .313 id
6	X8025	wheel, black, 4" x 1-1/4"
7	72645A	bolt, 5/16-18 x 2-1/4, hex
8	PX103G	gasket, lid, 8"od x 6-5/8 id x 1/8" thick
9	PX103	lid, screw-in, 6" clear w/ black ring
10	72656A	hose, 1-1/2", wire-reinforced, black
11	X8295	screw, black zinc
12	PX33	vacuum tube
13	PX31	float cage w/ heavy ball
14	72615A	coupling, pvc, 1-1/2 slip x slip

ref#	order#	description
15	X9154	pipe, pvc, schedule 40, 1-1/2", 9.5" long
16	PX63	coupler, plastic, 1- " slip
17	PX87	rocker switch
18	X8102	neon light w/ lens, orang
19	72387A	screw, #8 x 5/8 phil ph black
20	PX86	indicator light, green, 250v
21	X9152	switch panel w/o heater
	X9130	switch panel w/ heater
22	PAS36	expansion plug drain
23	PAS37	drain hose
24	7DL005	clamp worm gear 1-1/2 ss
25	X8235	washer, " flat, uss zinc
26	7GR016	elbow, 1-1/4h - 1-1/4m, nylon

LYNX PRO SERIES PARTS LISTING

BASE ASSEMBLY



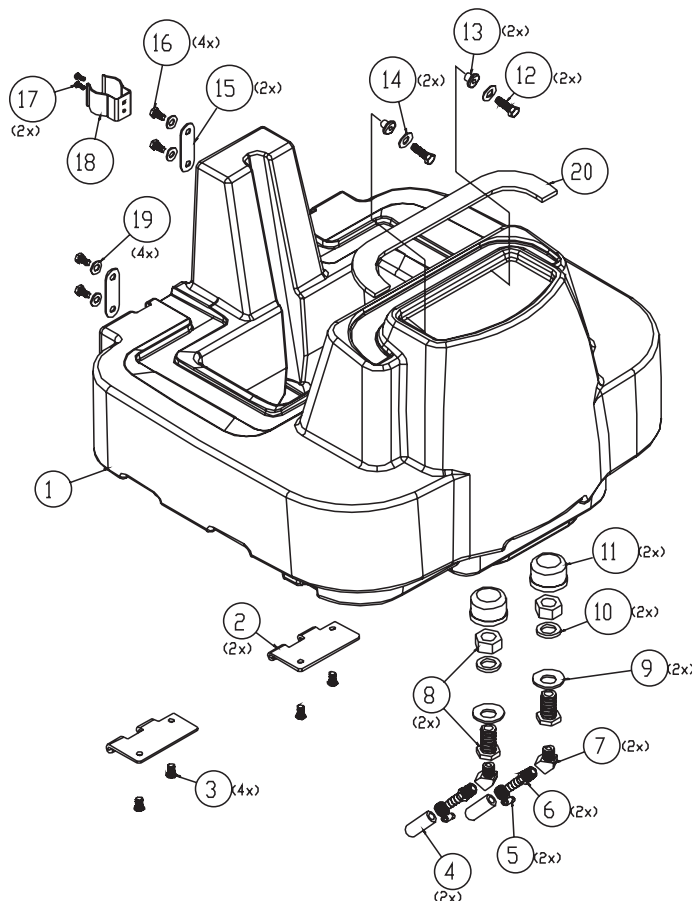
LYNX PRO SERIES PARTS LISTING

BASE ASSEMBLY

ref#	order#	description
1	72620AB	housing, base, black
2	72633A	axle
3	X9066	wheel, 12" x 1.75" non-marking,
	PX106B	wheel, 12" w/ 3/4" bore, all black
4	7GL002	push nut
5	7CM007	washer, 1/2 uss flat, 18-8 ss
6	72634A	bushing, 1/2" id x 3/4" od x 2-1/4" long
	72635A	spacer, 1/2" id x 3/4" od x 1/4" long
7	72640A	gasket, vac manifold, long
8	72623A	cover, vacuum manifold, long
9	7CW002	screw, #6 x 3/4 phil pan ts, type a 18-8 ss
10	72000A	rod, 3/16 x 5-1/2, all thread stud, 18-8 ss
11	72657A	screw, 10-24 x 4" long, hex head
	72658A	screw, 10-24 x 5" long, hex head
12	72651A	spacer, vac motor, 2.375" long
13	70020B	gasket, vacuum motor seal
14	1942-IE	vacuum motor, 115 vac, 104 cfm, 2 stage
	72365A	vacuum motor, 3 stage, 120v
15	7BF003	nut, kep, #10-24 zinc
16	7CM003	washer, #10 uss flat, 18-8 ss
17	72624A	cover, vacuum manifold, short
18	72641A	gasket, vac manifold, short
19	PX117A	gauge, 0-300 psi, 2-1/2", abs
	PC38	connector, double thread
20	72638A	pressure regulator plate
	X9157	cover, pressure regulator plate
21	72173A	spring clip, black vinyl coated
22	72636A	cover plate, bottom

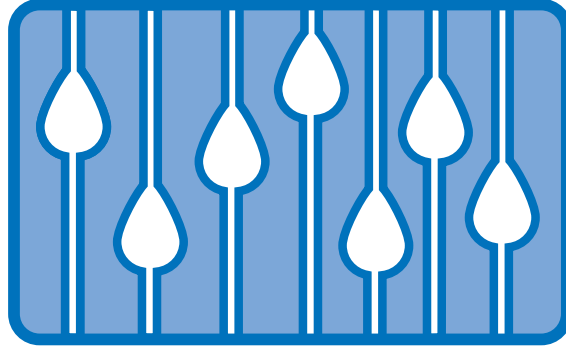
ref#	order#	description
23	72388A	screw, #10 x 5/8, tap phil, ss pan head
24	PX65	caster, 4" black
25	72490A	screw, 5/16-18 x 5/8, cap screw w/ hex socket
26	72387A	screw, #8 x 5/8, black, tap phil, pan head
27	72639A	gasket, mounting pressure regulator
28	X8256	nut, 8-32 keps, zinc
29	70063B	coupler, valved 1/4, quick disconnect
30	7CX002	nipple, hex 1/4 mpt
31	72115A	washer, 5/8 x 1-3/16, bonded seal, galvanized
32	PC38	connector, double thread, female
33	72642A	gasket, vac manifold, circle
34	72625A	cover, vacuum manifold, circle
35	72627A	gasket, pump mounting
36	72626A	pump mounting plate
37	X9069	end loop, ss, w/ 2 holes, 16g
38	PF1750	heater unit, 1750 watts
39	PT400-KIT3	pump assembly, 500 psi w/ hoses
40	X9022	heater mounting bracket
41	X8236	screw, 10-24 x 1-1/4", phil pan ms, zinc
42	72020A	screw, #12 x 1", self-tap, phms zinc
43	7BS003	screw, 1/4-20 x 1/2, phil, pan, ms 18-8 ss
44	X9014	hinge
45	PD8	strain relief, 1/2" npt
46	PX112	pigtail, black, 12/3 sjt x 39" long
47	PR112R	pigtail, red, 12/3 sjt x 39" long
48	X9131	cord panel
49	X8008N	nut, lock, 1/2" steel conduit
50	7BS002	screw, 8-32 x 1/2 phil, pan ms, 18-8 ss

SOLUTION TANK ASSEMBLY



ref#	order#	description
1	X9112GRN	housing, solution tank
2	X9014	hinge
3	7BS003	screw, phil pan ms, 18-8 ss
4	PX3H	hose, solution, 3/8" id x 1/8" wall
5	PX42	clamp, 5/8 worm gear
6	PX85	fitting, hose male/male barb
7	PX17	street elbow, 45° brass, 1/4" npt
8	PX48	fitting, brass, bulkhead, 3/4
9	72274A	washer, 3/4"
10	PX48G	gasket, fiber
11	71495A	pump protection filter
12	7CT002	bolt, 5/16-18 x 1" hex tap
13	PX88	grommet
14	7CM002	washer, flat #8 ss, toggle valve
15	X9140	tie down plate
16	7CP002	bolt, 5/16-18 x 1/2" hex tap
17	7BH004	screw, 10-32 x 3/8" phil pan ms
18	72173A	spring clip, black vinyl coated
19	X8218	washer, 5/16 sae flat zinc
20	X9149	gasket, foam strip

ANIVAC



WARRANTY

Anivac warrants to the original purchaser that products manufactured are free from defects of workmanship and material, provided such goods are operated and maintained in accordance with the instructions herein for a period of one year from the date of purchase. Should you have any trouble with your machine please contact us directly and we will be happy to take care of the warranty settlement. Labor charges for repairs are included as part of the warranty. NOTE: Alterations and changes made to the machine without written approval of Anivac and use of unapproved spare parts will not be covered by warranty.

Anivac Corporation, 7 Innovation Dr, Suite 123
Flamborough, ON, Canada
Toll Free: 866-887-1994 Fax: 905-690-6042
Ph: 905-690-4416
www.anivaccorp.com